



GEORGIA SEED
DEVELOPMENT

Athens Seed Facility
2420 S. Milledge Avenue
Athens, GA 30605
706-552-4525

August 2024 Update
www.gsdc.com

Plains Peanut Facility
1547 US Hwy 280 W
Plains, GA 31780
229-824-7881

Seed for Thought

Roger Boerma, Executive Director

As I sat down at my computer to prepare this message my thoughts were on the path of Hurricane Debby which was moving across northeastern Florida and into southeastern Georgia. I have a special interest in the direction of Hurricane Debby since my daughter, son-in-law, and two grandchildren reside on Isle of Hope just outside of Savannah.

It is amazing to me what was important just days ago seemed of less consequence today given the development of this damaging storm. If you would ask me what was on my mind last week, I would list the people experiencing armed conflicts in Ukraine and Israel, the undocumented individuals entering our country every day, the size of our U.S. debt, and the U.S. presidential process. Although these were issues that occupied my mind, I realized my limited ability to impact them.

This brings me to the question of can I justify the time and energy required to stay abreast of these issues that I cannot directly resolve? Since I am engaged in agriculture, I spend a great deal of time studying weather forecasts for Athens, Plains, and other locations. Remember it was wet in May, hot and dry in late June, and we experienced adequate rainfall in most Georgia locations during July. While I spend a great deal of time studying weather forecast and cannot impact them, I can make better decisions based on their information.

The example of the weather forecast provides me a hint into the answer for the question I posed above. Like studying the weather forecast helps me to inform decisions on whether we proceed to harvest Foundation wheat or dig Foundation turfgrass sprigs, keeping abreast of our national and political issues helps to make me a more informed citizen. Given the importance to our country of making knowledgeable decisions when selecting our leaders this November, I hope all of us embrace the concept of staying informed. What a unique thought!

Foundation Turfgrass Production outside of Georgia

Blake Fleeman, Licensing/Marketing Manager

Currently GSD has two Foundation Turfgrass Production fields outside of Georgia. One is a TifTuf Bermudagrass Foundation field in Escondido, CA. This field has been in CA since 2016. I was recently out in Escondido to inspect the field prior to harvested sprig material going to Arizona. The field was approved for harvest and the grass was shipped to the licensee. GSD has also established a SeaScape Paspalum Foundation field in Arcadia, FL. This field was established in 2023. We have been trying to harvest this field for a licensee on the East Coast of Florida, but the weather has not been cooperating. The licensee had hope to get planting material last week, but the farm was flooded by a storm and then again by Hurricane Debby.



Foundation TifTuf Field, Escondido, CA

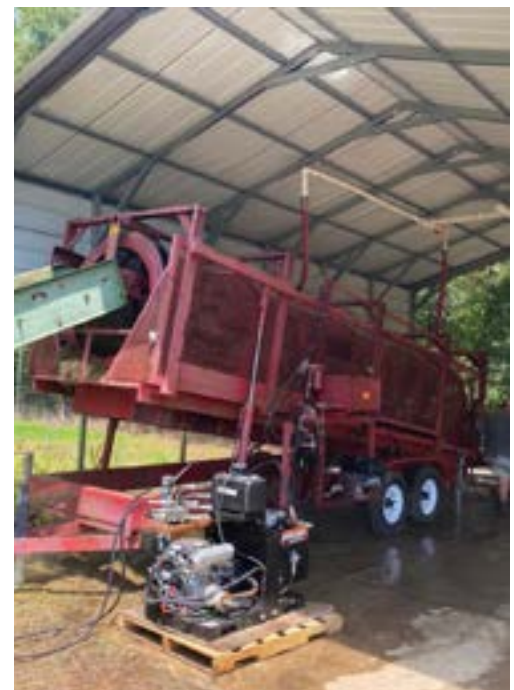


Flooded Field in Arcadia, FL

Foundation Turfgrass Sprig Washer Relocation

Caleb Warrington, Senior Director

GSD has had a very busy year digging turfgrass for licensees both domestic and abroad. Our licensees on the west-coast and overseas require soil-free sprigs, which is a particularly labor-intensive task during the hot summer months. Harvested sprigs must be washed to the point that all vegetative material is free of soil. USDA-APHIS is required to do an in-field inspection before issuing the necessary phytosanitary certificate. Prior to July, the washer used for large orders was housed in Tifton with UGA turfgrass breeder, Dr. Brian Schwartz. This required travel to Tifton for multiple days at a time to fulfill orders for washed grass. In July, Dr. Schwartz allowed GSD to relocate the washer for use at our foundation turfgrass facility at the UGA Iron Horse Farm just south of Athens. This relocation will allow us to process turf orders in a more timely manner and reduce transport and travel expenses. Dr. Schwartz will be receiving a new washer at his facility in Tifton to handle his needs.



Processing/Production

**Doug Batchelder, Athens, and Justin Tanner, Plains
Production Managers**

PEANUT PRODUCTION

From April 21 through May 31 2024, we received 11.2 inches of rain in the Plains area. The constant rain showers made for a difficult peanut planting season, resulting in either an early planted crop or a late planted crop. This year peanuts should experience a low level of pressure from TSWV. Georgia Seed Development's Foundation peanut production plan includes 11 released varieties (9 runners and 2 Virginias) along with 3 experimental increases. Our production plan consists of over 2,200 peanut acres with an expected harvest of over 5,000 tons of farmer stock inventory. The following list the specific varieties/experimental lines and each of their respective acreage: Foundation Georgia-06G, 1,411 acres; Foundation Georgia-20VHO, 24 acres; Georgia-18RU Peanuts, 90 acres; Foundation Georgia-14N, 17 acres; Foundation TifJumbo, 7 acres; Foundation TifNV HG, 478 acres; Foundation Georgia-11J, 6 acres; Foundation Georgia-21GR, 92 acres; Foundation Georgia-22MPR, 94 acres; Foundation Georgia-16HO, 11 acres; Foundation Georgia-23RKN, 6 acres; Breeder Georgia 192710, 3 acres; Breeder Georgia 183129, 33 acres; and Breeder Georgia 182729, 2.2 acres.

TURFGRASS PRODUCTION

We had a busy June fulfilling multiple domestic Turfgrass orders of TifEagle, Tifway, and TifTuf. We also washed and shipped an order of a new zoysiagrass line from Dr. Schwartz's program to establish a Foundation field in Texas. Before the rains really kicked into high gear in July, we dug, washed, and shipped TifEagle, TifTuf, and Tif3D to a licensee in Spain. Unfortunately, all turfgrass digging operations in Athens were delayed in the second half of July due to excessive amounts of rainfall. We will be digging TifEagle and Tif3D for shipments to Arizona and California as well as multiple shipments of Tifway to domestic customers.

SOYBEAN PRODUCTION

We are producing small acreages of two experimental soybean lines from Dr. Li's program this year. Both are indeterminate, Group VII forage-type soybeans for wildlife mixes.

BAHIAGRASS PRODUCTION

All 13 acres of TifQuik bahiagrass were harvested the last week of June. The seed was then dried and placed into medium term storage for processing and bagging during December. Yields were better than last year and the germination looks good. The older 4.5 acre section of the Foundation bahiagrass field was sprayed with a high rate of Roundup and reworked for replanting the first week of August. This was done due to the continuous reduction in seed yield for that part of the field.

SMALL GRAINS

Foundation wheat was harvested in May with 3,076 bushels transported to the Athens Facility and 1,085 bushels remaining in Plains for conditioning and bagging. A total of 13 different varieties were harvested, 10 of which were harvested by GSD's Almaco Purity Combines. Wheat processing and bagging operations have been completed in Plains and are awaiting tagging for pickup. Processing and bagging the remaining varieties in Athens is ongoing and should be completed by the end of September.

SIGHTS AROUND GEORGIA SEED



Foundation Soybean Field, G21-10769RR-T
in Watkinsville, Georgia



Buddy Parker and Corey Booth washing Zoysia
Turgrass Sprigs at the Iron Horse Farm



Foundation Tif3D Athens, GA



Foundation TifTuf Field Marshallville, GA

UPCOMING EVENTS

Southwest Georgia Field Day
August 15, 2024 Plains, GA

Georgia Peanut Tour
September 17-19, 2024 Americus, GA

Georgia Seed Development Board Meeting
November 13, 2024 Athens, GA

