



GEORGIA SEED  
DEVELOPMENT

Athens Seed Facility  
2420 S. Milledge Avenue  
Athens, GA 30605  
706-552-4525

May 2020 Update  
[www.gsdc.com](http://www.gsdc.com)

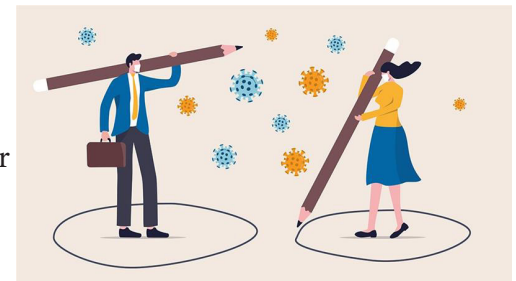
Plains Peanut Facility  
1547 US Hwy 280 W  
Plains, GA 31780  
229-824-7881

## Seed for Thought

**Roger Boerma, Executive Director**

The COVID-19 has definitely had a major impact on our lives. At this stage of the pandemic we have all experienced challenges that we likely had not fully prepared for in our families and our businesses. In January of 2020 we were enjoying a robust economy that was projected to continue for the next 12 to 18 months. When we first learned of COVID-19 many of the health experts told us not to be concerned about its impact in the United States. They indicated the disease was going to be a problem in a number of Asia countries, but not in our country. A couple of months later, the epidemic modelers informed us to expect over 2 million U.S. fatalities from the disease. Today, we are experiencing an impact somewhat between these two extremes, while in the course of limiting the impact from the virus our U.S. economy has been battered. Our state and national leaders are currently struggling to find ways to reduce the infection rates from the virus while at the same time reopening the U.S. economy.

What are the current take-home lessons from this crisis? I imagine most of us have found that many of the experiences that we had previously taken for granted are not guaranteed - like shaking hands, attending church services, entertaining friends in our homes, getting a haircut, and going to our favorite restaurant to celebrate our spouse's birthday. We have likely identified things about ourselves and others that we may not have previously known, such as the risks that we are willing to take with our health and the health risk that various family and staff members are willing to tolerate.



It is my observation that the people I associate with tend to fall into one of three groups based on their risk tolerance: i) Afraid, ii) Guarded, or iii) Reckless. After the virus arrived in the United States, individuals in the "Reckless" group proceeded with their lives without regard to their or others' health risks. Based on their behavior the COVID-19 did not exist and it wasn't going to impact their activities in any way. Members of the "Afraid" group hang on every word that was spoken or written by any national, state, or local official. They wanted to be told what to do and were going to follow these directives regardless of how much sense they made. It was very troubling to them when the various officials provided conflicting directions. They were not going to come out of their homes even if it was burning down.

I characterize the final group as "Guarded." People in this group stayed abreast of all the guidelines and directives from elected officials and scientists, but were able to filter this information based on their own value systems and beliefs. I believe these individuals are what our Founding Fathers had in mind when they crafted the U.S. Constitution. It is this last group that will lead us back to the robust economy we all desire. Be brave, be safe, and be productive.

## Marketing

**Blake Fleeman, Licensing/Marketing Manager**

The last half of February and the first week of March continued to be a very busy with trade shows and meetings for GSD. I was able to attend the National Peanut Buying Points Annual Convention in Ashville, NC this year. The convention was well attended and included some very informative speakers. Terry Hollifield and I then left for a weeklong trip to attend the Turfgrass Producers International meeting in Orlando FL. On the way to Orlando, we stopped in Jacksonville, FL for a luncheon to commemorate a turfgrass license signing event with Chubu Turf from Japan. Chubu Turf has several other UGA grasses, but this event was for TifTuf. After the signing event we continued to the TPI meeting. Attendance from both domestic and international producers was very good for the TPI meeting. On Wednesday TPI hosted a field day on a nearby producer's farm with a large number of exhibits and field demonstrations. After the TPI meeting Roger, Terry and I attended the Alabama Crop Improvement Association annual meeting in Auburn AL. This meeting gave us an opportunity to visit and communicate with some of our Alabama licensees. Since early March all the other trade shows and meetings that GSD had planned to attend were canceled or rescheduled due to COVID-19.



*Chubu Turf signing event with representatives of GSD, GCIA, UGA, and Chubu*

## Licensing

**Blake Fleeman, Licensing/Marketing Manager**

SIGN  
HERE

The licensing activity has continued during the COVID-19 pandemic. GSD had several request for new peanut licenses. We also had several requests for new international turfgrass agreements in several different countries. UGARF and GSD have begun working with a couple of companies on four new soybean varieties from Dr. Li's program. We also continue to have a few requests for currently released blueberry varieties.

## Processing/Production

Doug Batchelder, Athens, and Justin Tanner, Plains; Production Managers

### SMALL GRAINS PRODUCTION

GSD has a total of 18 Foundation small grain increases planted on approximately 160 acres; 11 wheat varieties, 1 oat variety, 1 rye variety, and 5 experimental wheat lines. Seven of the wheat varieties are new increases from the UGA and the LSU wheat breeding programs. All of our wheat increases were treated at flowering with a fungicide and insecticide. We have had a warm, wet winter and the spring has proven to be a bit of a roller coaster with large temperature fluctuations. All of the increases appear to be relatively scab free. We are a few weeks from harvest in the Athens area and the wheat is about 10 to 14 days earlier in Plains.

Foundation TifQuik bahiagrass seed harvested from our field in Plains was processed earlier this year and has been distributed to licensees.

### SOYBEAN PRODUCTION

We have plans to produce Foundation increases of several soybean varieties this year; AGS Woodruff, Cook, SH 7418LL, AGS 747LL, and several new varieties from Dr. Li's program.

### FOUNDATION TURFGRASS PRODUCTION

The weather is finally cooperating and soil temperatures have warmed up enough in Athens for all of our Foundation fields to be fully greened up. We have already been able to fill some orders for Foundation Tiftuf sprigs for domestic licensees. We anticipate there being more domestic orders later in the season as well as several international orders of TifTuf and TifGrand. Last fall's renovation of the turf varieties in GSD's sand field and in the TifDwarf field at GCIA were successfully completed and are growing in nicely. The other half of the TifDwarf field at GCIA will be renovated next month.

### BLUEBERRY PRODUCTION

We shipped a partial order of Foundation blueberry plants to Japan and have planted the balance of the order in Athens to allow testing for verification the plants are free of diseases prior to the completion of the shipment.

### PEANUT PRODUCTION

Our contract growers are currently planting Foundation peanuts. Conditions in May are not as favorable as they were in April. May's cooler temperatures and a lack of rainfall present challenges that hinder uniform seed germination and plant stands. Our 2020 production plan consists of the following varieties: 1,250 acres of GA 06G, 107 acres of GA 18RU, 100 acres of GA 16HO, 30 acres of GA 14N, 130 acres of Tif NV, 25 acres of GA 11J, 25 acres of GA-142728, 2 acres of GA 19HP, 1 acre of GA-142537, and 1 acre of Tif Jumbo. The 1,671 acres of 2020 Foundation peanuts is projected to produce 4,098 tons of farmer stock peanuts. This compares with 1,514 acres of Foundation peanuts and 3,504 tons of farmer stock peanuts in 2019.

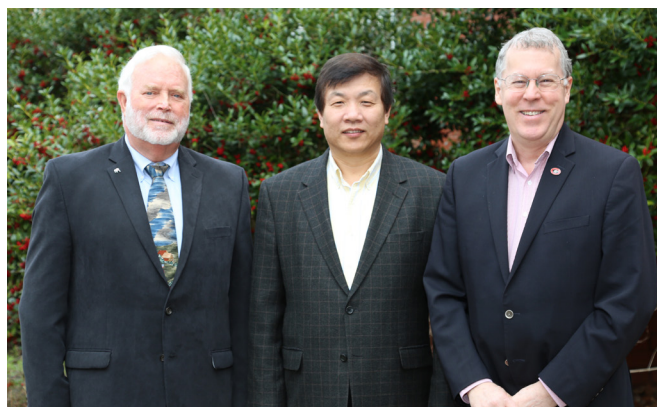


## *Sights around Georgia Seed*



Dr. Bill Branch was named to the **Georgia Seed Development Professorship in Peanut Breeding and Genetics** at UGA.

(left to right: Michael Towers, Kent Fountain, Bill Branch,



Dr. Zenglu Li was named to the **Georgia Seed Development Professorship in Soybean Breeding and Genetics** at UGA

(left to right: Jimmy Clements, Zenglu Li, and Sam Pardue)



Foundation GO Wheat 2032 Field in Dublin, GA



GSD Foundation 'TifEagle' and 'SeaStar' growing in at the Athens, GSD Facility



New peanut warehouse construction is under-way at the Plains GSD Facility.



Georgia Seed Development is a proud member of Georgia Grown, a program of the Georgia Department of Agriculture.  
<http://georgiagrown.com>